

## Zenith Radio Corp.

**Model:** 52

**Chassis:**

**Year:** Pre 1932

**Power:**

**Circuit:**

**IF:**

**Tubes:**

**Bands:**

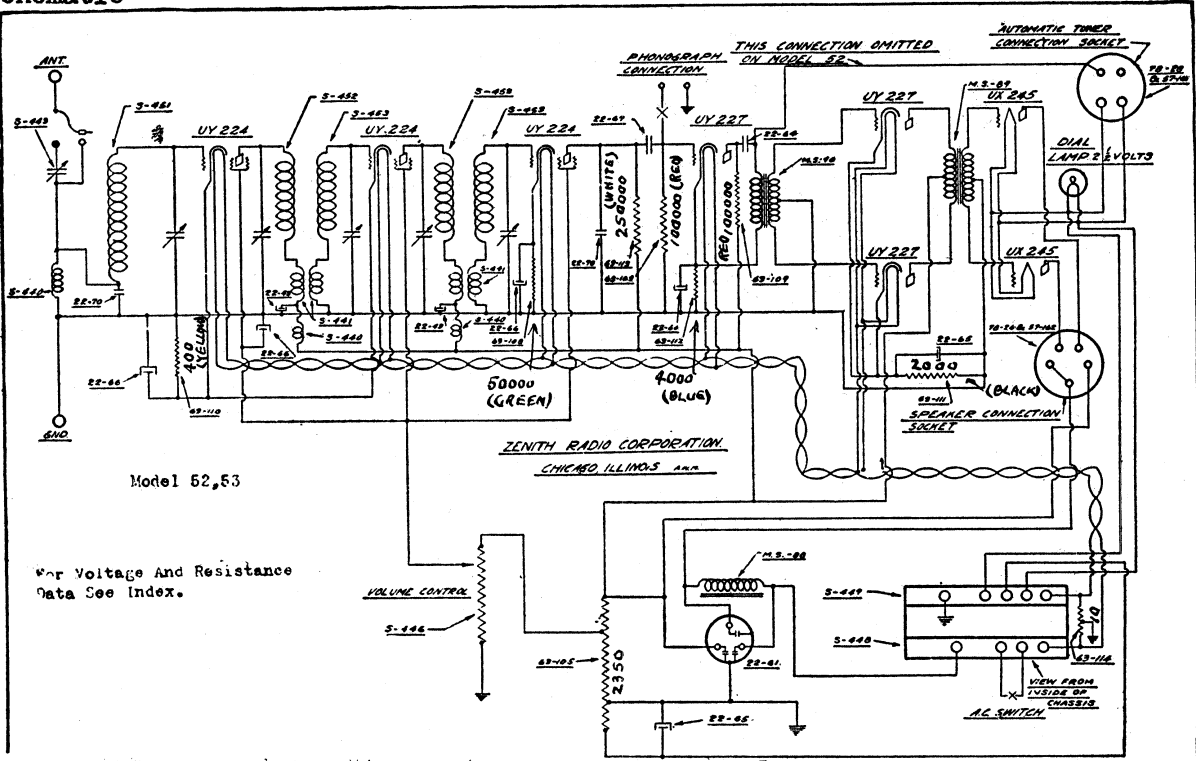
### Resources

[Riders Volume 1 - ZENITH 1-14](#)

[Riders Volume 1 - ZENITH 1-15](#)

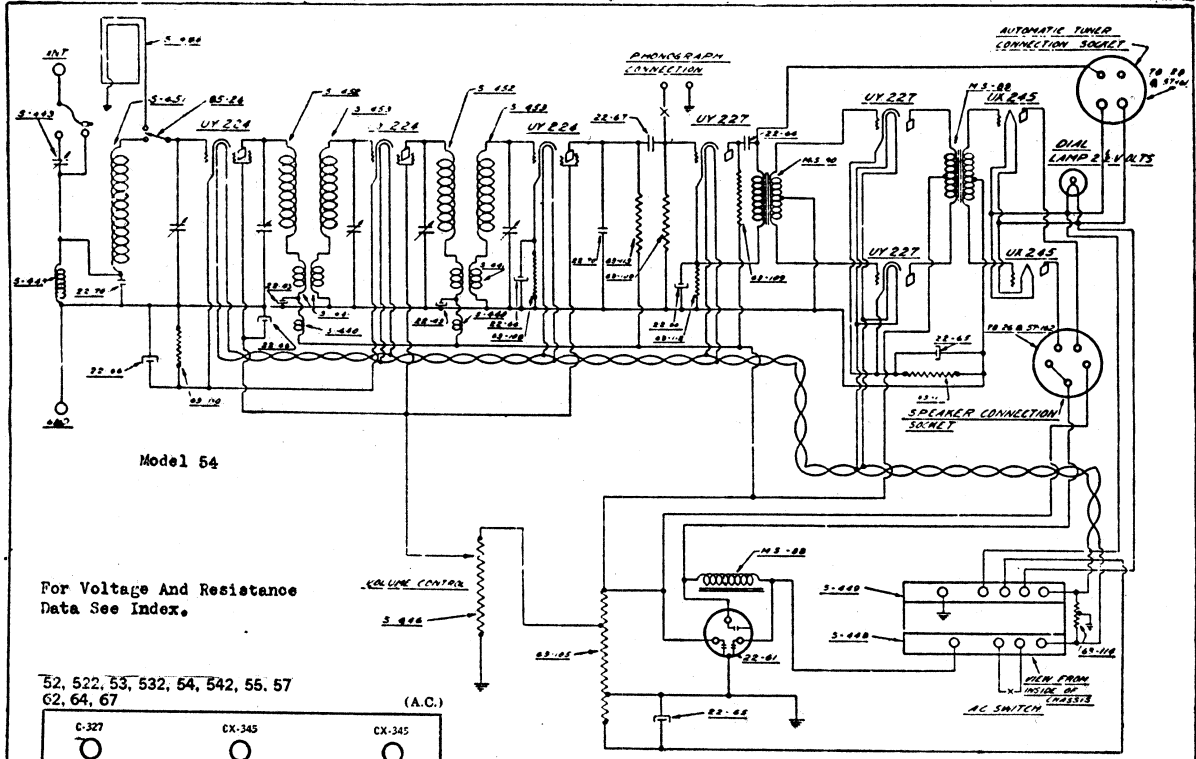
MODEL 52,53  
MODEL 54  
Schematic

ZENITH RADIO CORP.



Model 52,53

For Voltage And Resistance Data See Index.



Model 54

For Voltage And Resistance Data See Index.

52, 522, 53, 532, 54, 542, 55, 57  
62, 64, 67

(A.C.)

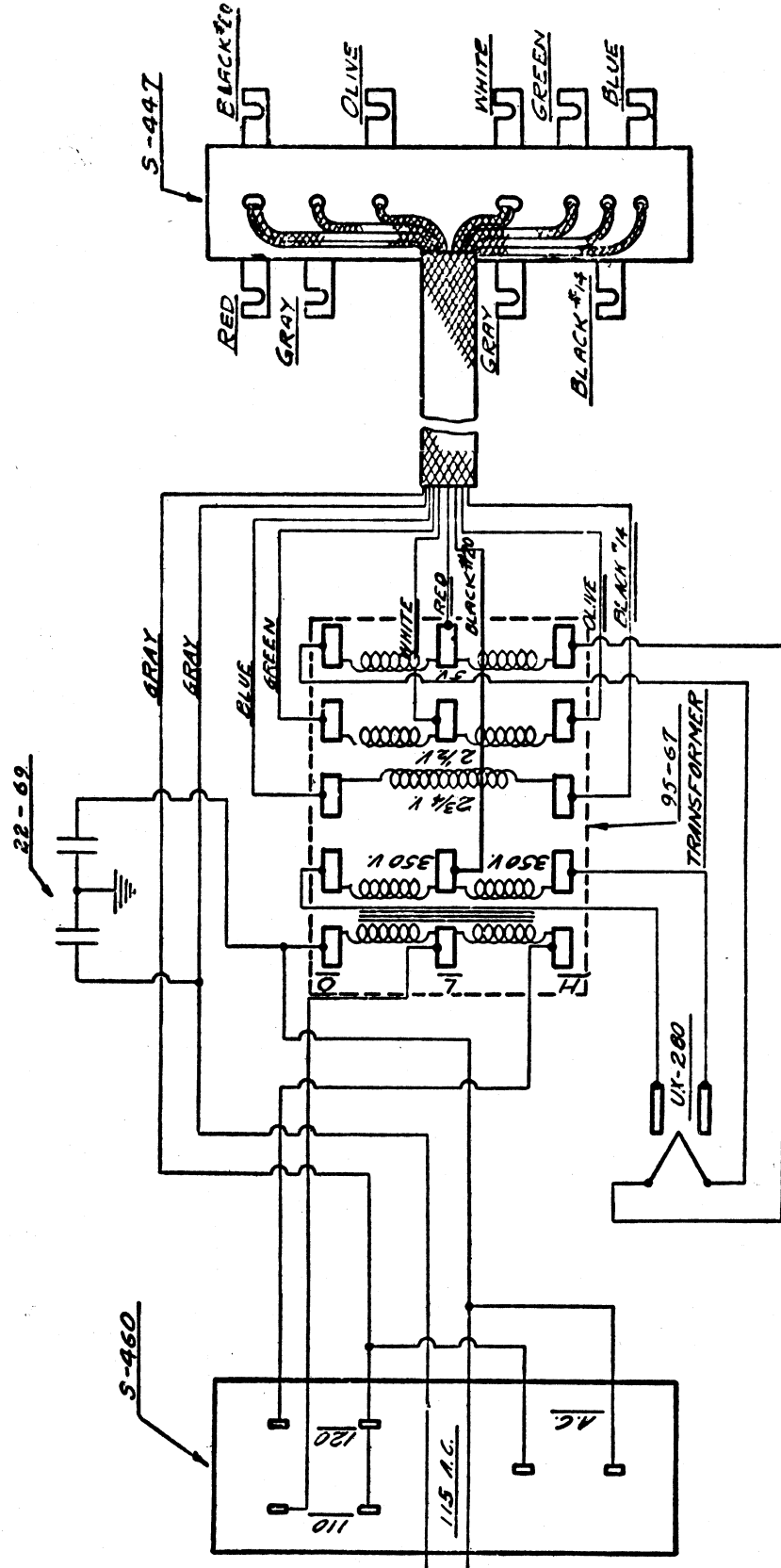
C-327 1st A.F.	C-327 2nd A.F.	CX-345 3rd A.F.	C-327 2nd A.F.	CX-345 3rd A.F.
C-324 Det.	C-324 2nd R.F.	C-324 2nd R.F.	C-324 2nd A.F.	C-324 1st R.F.

2 CX-381's in separate power unit

ZENITH RADIO CORPORATION  
CHICAGO, ILLINOIS  
MODEL 54

ZENITH RADIO CORP.

MODEL 52,53,54,55  
 Voltage - Resistors  
 MODEL ZE-50  
 Power Unit



ZENITH—Models 52-53-54-55  
 Line Voltage 115—Set on 120 Volt Tap—Volume Control Position Full On  
 \*The screen grid voltage on the detector tube is actually 50 volts but an electrostatic voltmeter would be needed to show true voltage.

TUBE NO. IN CHASSIS	TYPE OF TUBE	POSITION OF TUBE IN CHASSIS	READINGS PLUG IN SOCKET OF SET.											
			TUBE OUT		TUBE IN TESTER		CATHODE		NORMAL PLATE		PLATE		SCREEN	
A	B	VOLTS	VOLTS	VOLTS	VOLTS	VOLTS	VOLTS	VOLTS	VOLTS	VOLTS	VOLTS	VOLTS	VOLTS	
22A	22A	3A1 AF	2.4	1.75	1	2	1.6	2.8	50					
22B	22B	3A1 AF	2.4	1.75	1	2	1.6	2.8	50					
22C	22C	3A1 AF	2.4	1.75	1	2	1.6	2.8	50					
22D	22D	3A1 AF	2.4	1.75	1	2	1.6	2.8	50					
22E	22E	3A1 AF	2.4	1.75	1	2	1.6	2.8	50					
22F	22F	3A1 AF	2.4	1.75	1	2	1.6	2.8	50					
22G	22G	3A1 AF	2.4	1.75	1	2	1.6	2.8	50					
22H	22H	3A1 AF	2.4	1.75	1	2	1.6	2.8	50					
22I	22I	3A1 AF	2.4	1.75	1	2	1.6	2.8	50					
22J	22J	3A1 AF	2.4	1.75	1	2	1.6	2.8	50					

Color Code of Resistors in 50 Series

63-101	50000 ohms	Green
63-109	100000 ohms	Red
63-110	400 ohms	Yellow
63-111	2000 ohms	Black
63-112	4000 ohms	Blue
63-113	250000 ohms	White
63-121	100000 ohms	Pink

The voltage divider 63-105 has a total resistance of 6000 ohms tapped at 850 ohms from one end and 2800 ohms from the other end. The remaining section has a resistance of 2350 ohms. Marshon filter units are used.