

## Atwater Kent

Model: 55F

Chassis:

Year: Pre June 1933

Power:

Circuit:

IF:

Tubes:

Bands:

### Resources

Riders Volume 1 - A.-K. 1-20

Riders Volume 1 - A.-K. 1-21

Riders Volume 1 - A.-K. 1-22

Riders Volume 1 - A.-K. 1-23

Riders Volume 3 - A-K 3-23

Riders Volume 3 - A-K 3-24

Riders Volume 3 - A-K 3-25

Riders Volume 3 - A-K 3-26

Riders Volume 3 - A-K 3-27

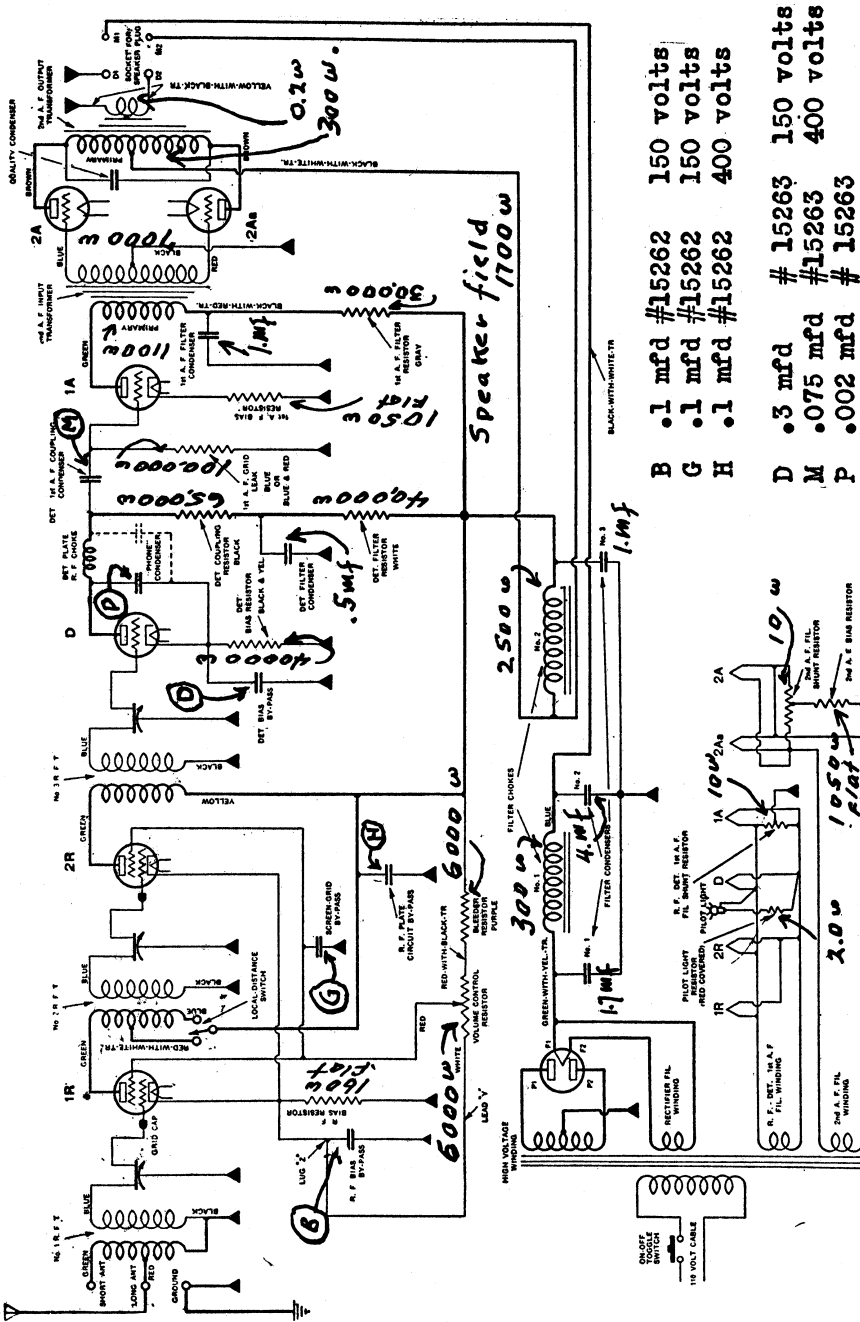
**MODEL 55-F and 55-FC**  
**Early**

**ATWATER KENT MFG. CO.**

**VOLTAGE TABLE**

Tube	Filament	Plate	Grid	Screen
R-F	2.2	160	3.7	96
Det	2.2	101	11.	
1st A-F	2.2	69	2.8*	
2nd A-F	4.5	174	41.	
Rect.	4.5			

\* Measured voltage, not operating voltage. Line voltage 110 V.

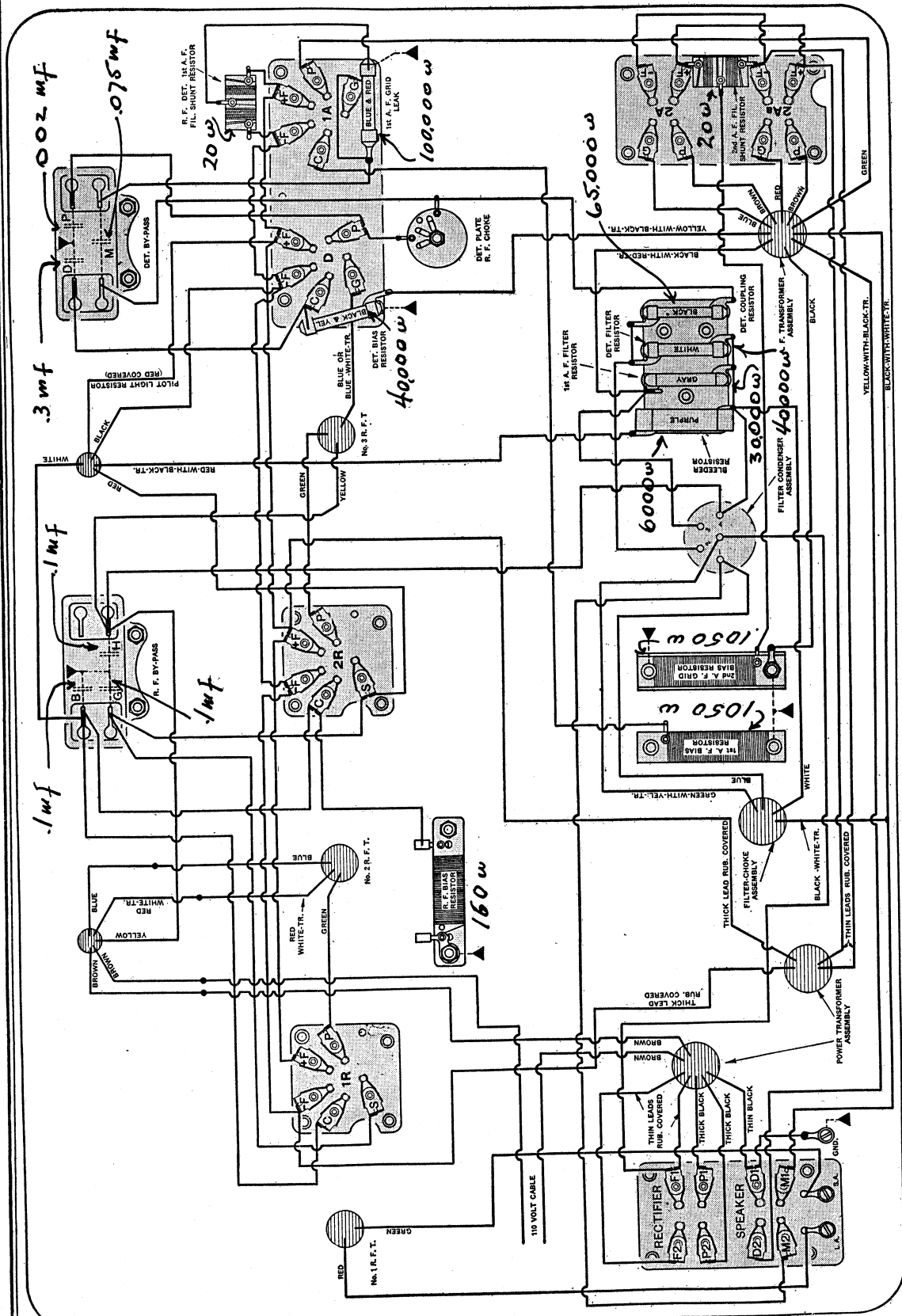


- B .1 mfd #15262 150 volts
  - G .1 mfd #15262 150 volts
  - H .1 mfd #15262 400 volts
  - D .3 mfd # 15263 150 volts
  - M .075 mfd #15263 400 volts
  - P .002 mfd # 15263
- FILTER CONDENSER CONNECTIONS.** (See chassis layout  
 The numbers and connections stated are marked upon the filter unit can and are  
 also shown on the chassis layout within the circle designating the filter con-  
 denser can.
- Filter #1 1.7 mfd connected between the center stud and can
  - Filter #2 4.0 mfd connected between terminal (1) and can
  - Filter #3 1.0 mfd connected between terminal (4) and can
  - Detector filter .5 mfd connected between terminal (2) and can
  - A-f filter 1.0 mfd connected between terminal (3) and can

DIAGRAM OF EARLY-TYPE MODEL  
 55-F AND 55-F-C.

# ATWATER KENT MFG. CO. MODEL 55-F and 55-FC

## Chassis Early

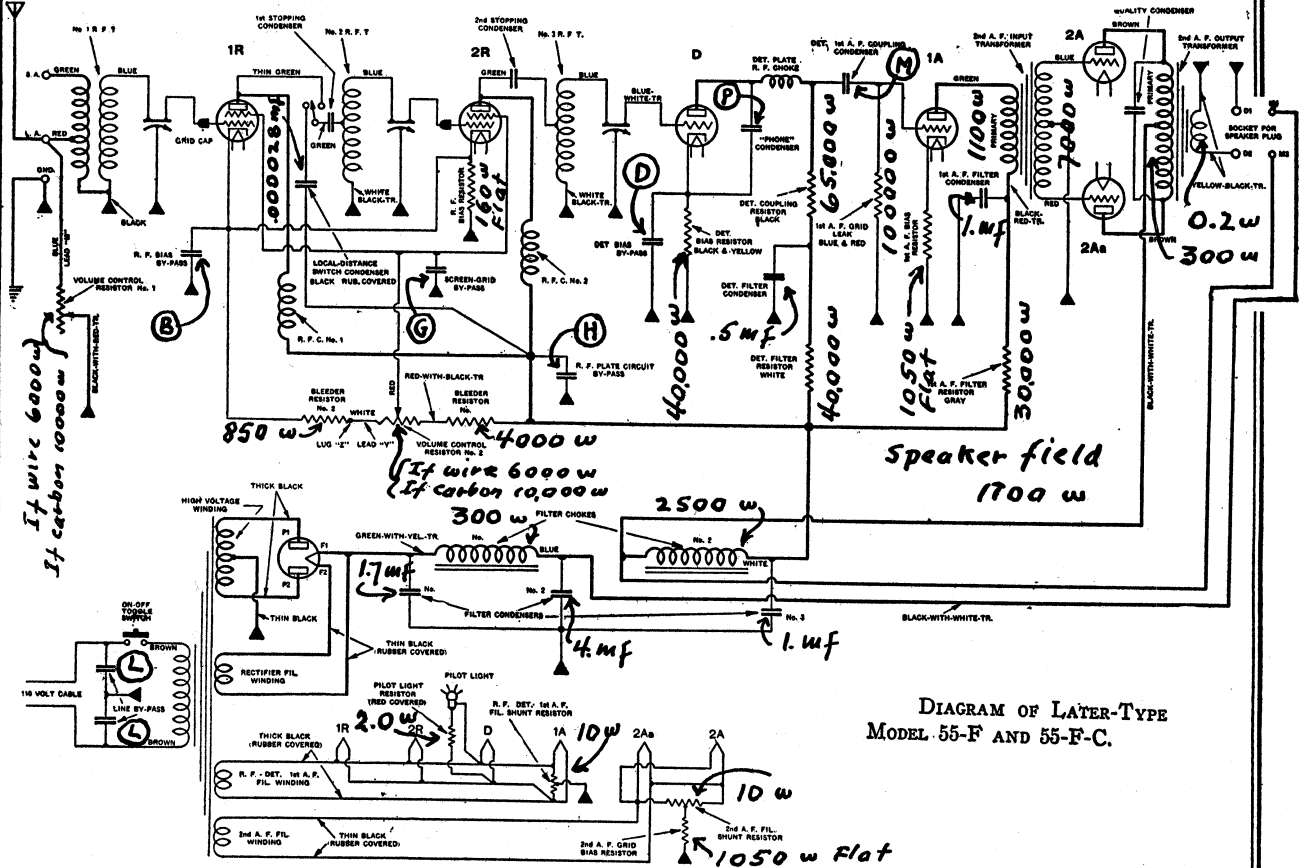


BOTTOM WIRING OF EARLY-TYPE MODEL 55-F AND 55-F-C.  
 Some of these sets had a combination resistor, No. 15274, which is superseded by two separate resistors, No. 16988 being used as R. F. bias resistor, and No. 17077 as filament shunt resistor.

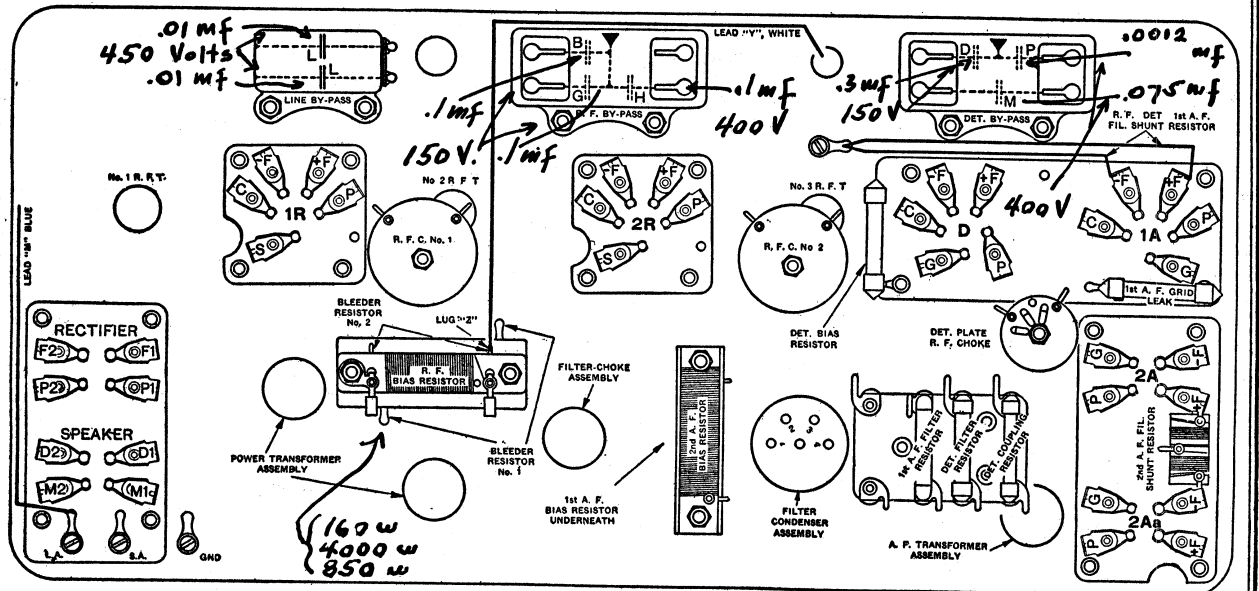
**MODEL 55-F and 55-FC**  
**Late**  
**Chassis**

**ATWATER KENT MFG. CO.**

**FILTER CONDENSER CONNECTIONS.** See data pertaining thereto on page 162  
 Bypass condenser specifications are shown below.



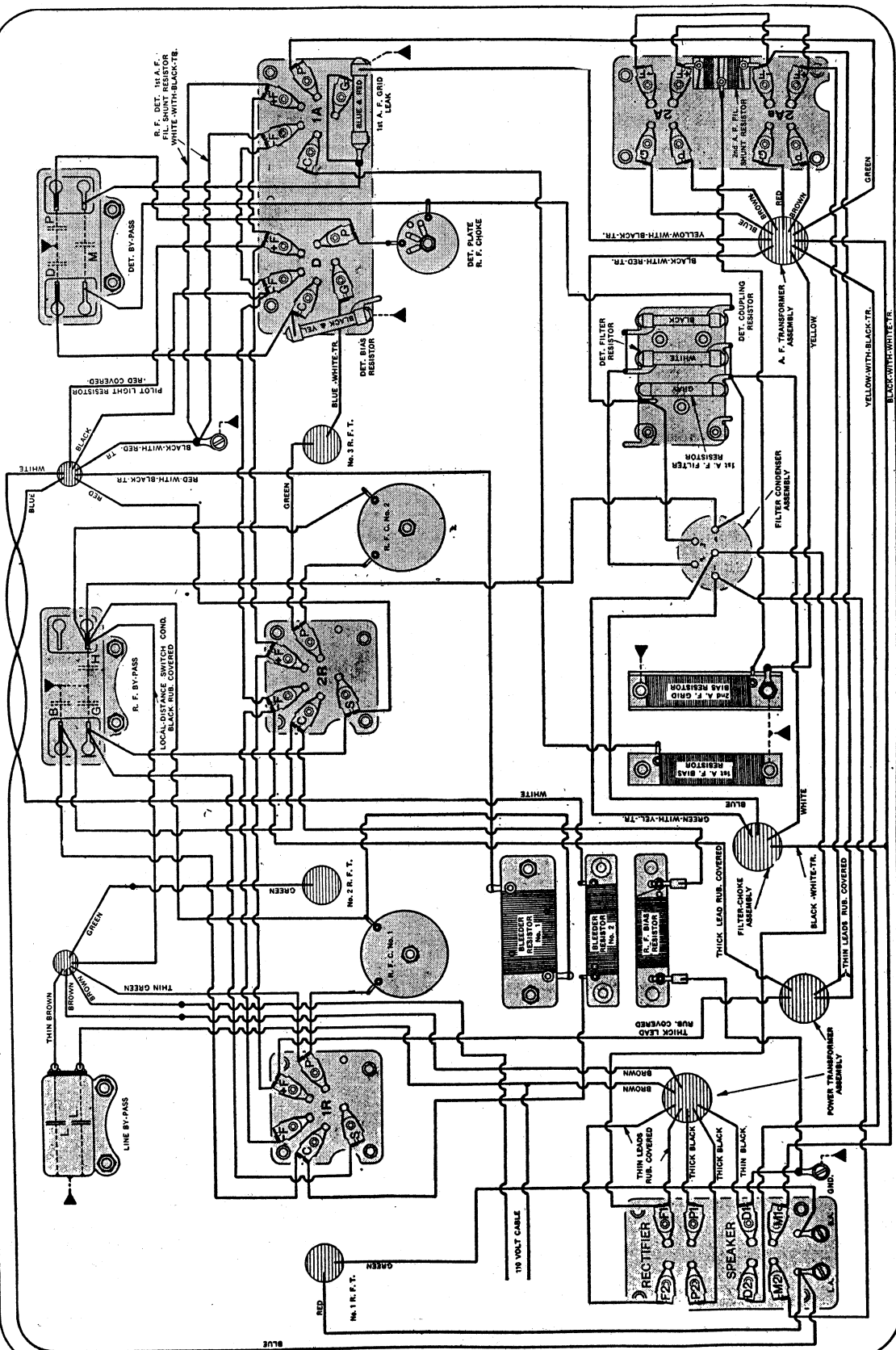
**DIAGRAM OF LATER-TYPE MODEL 55-F AND 55-F-C.**



**BOTTOM CHART OF LATER-TYPE MODEL 55-F AND 55-F-C.**

Condenser reference on page 1-20.

ATWATER KENT MFG. CO. MODEL 55-F and 55-FC Late Chassis



**BOTTOM WIRING OF LATER-TYPE MODEL 55-F AND 55-F-C.**  
 The 1st-A. F. bias resistor is mounted under the 2nd-A. F. bias resistor. The three other wire-wound resistors are mounted together, being insulated from each other by sheets of fibre.  
 Some of these sets had a combination resistor, No. 16988, which is superseded by two separate resistors, No. 16988 being used as R. F. bias, and No. 16989 as bleeder No. 2.

ATWATER KENT MFG. CO.

MODEL 55 and 55-C

Late  
Schematic  
Chassis

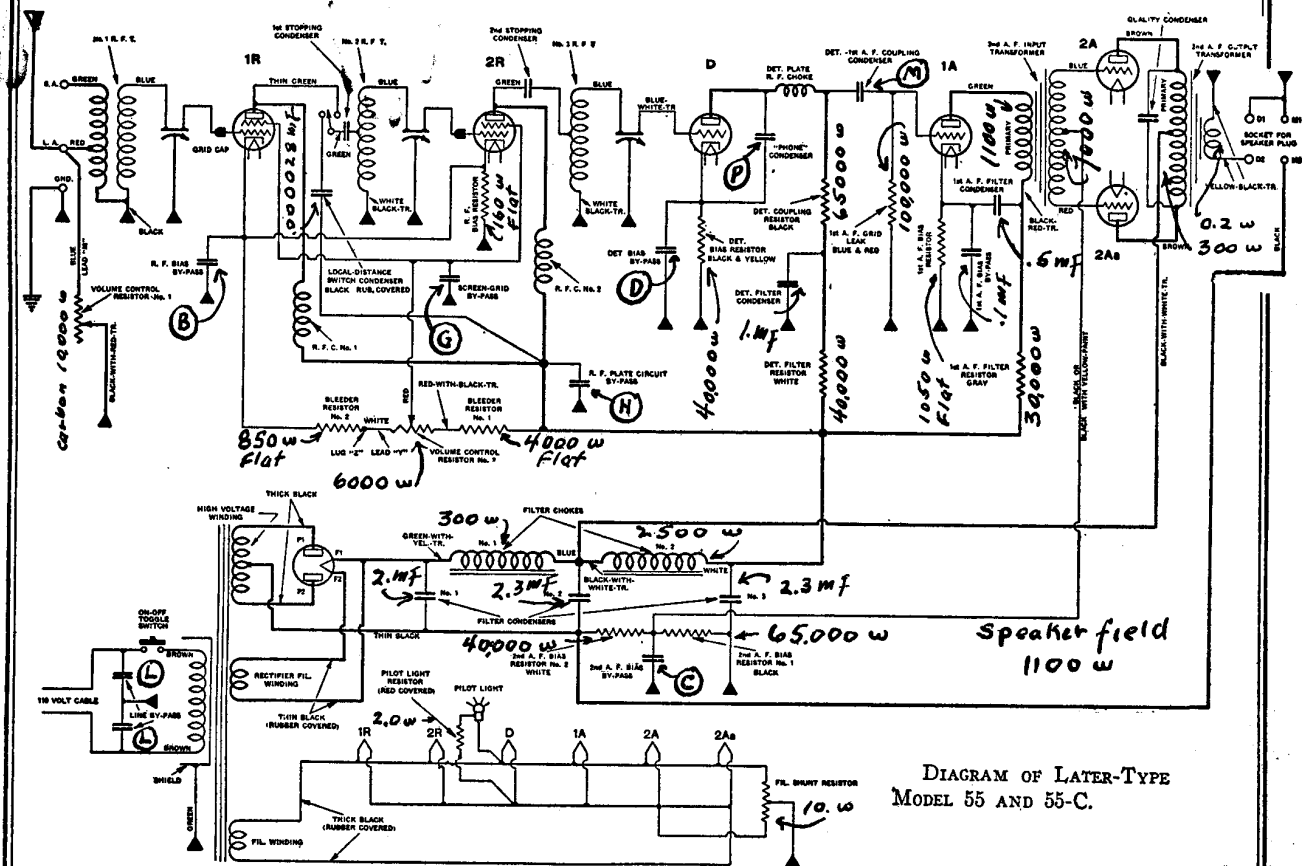
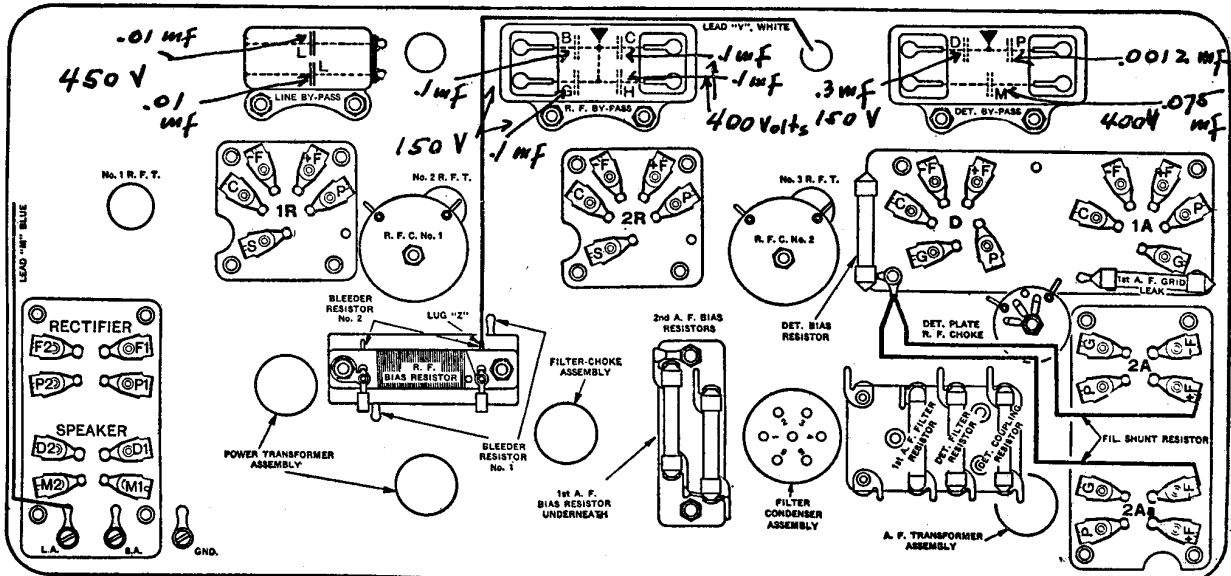


DIAGRAM OF LATER-TYPE MODEL 55 AND 55-C.



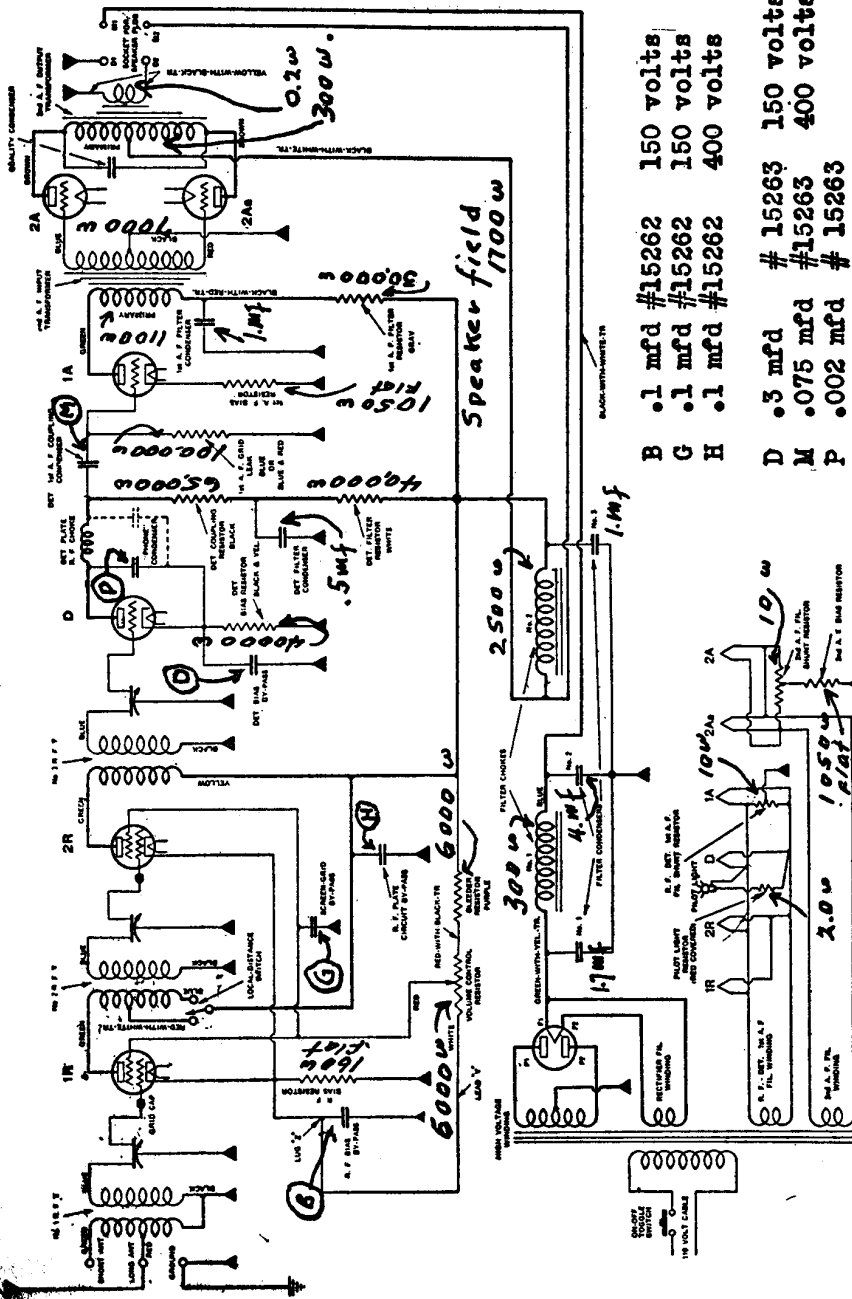
BOTTOM CHART OF LATER-TYPE MODEL 55 AND 55-C.

**MODEL 55-F and 55-FC ATWATER KENT MFG. CO.**  
**Early**

**VOLTAGE TABLE**

Tube	Filament	Plate	Grid	Screen
R-F	2.2	160	3.7	96
Det	2.2	101	11.	
1st A-F	2.2	69	2.8*	
2nd A-F	4.5	174	41.	
Rect.	4.5			

\* Measured voltage, not operating voltage. Line voltage 110 V.

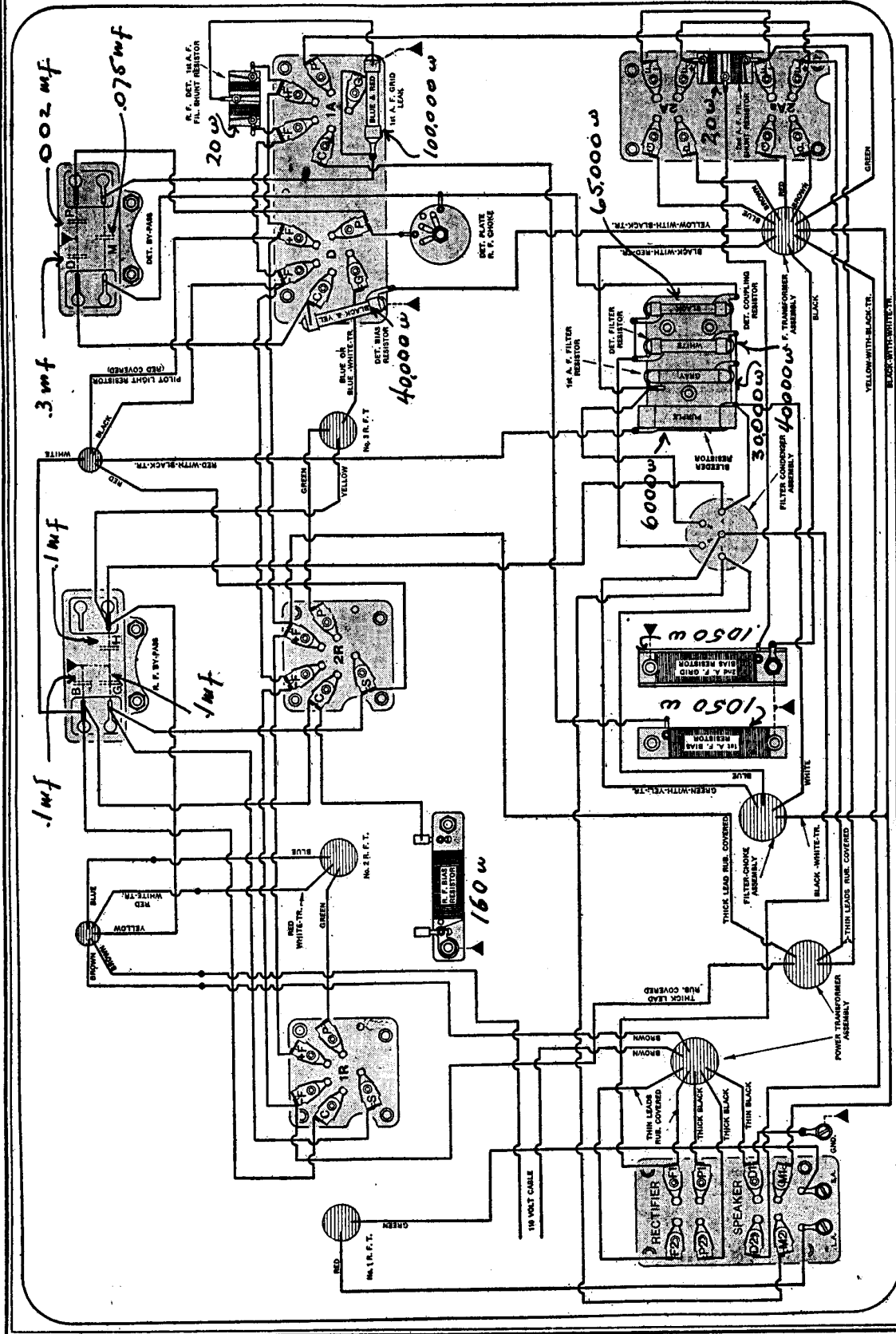


**FILTER CONDENSER CONNECTIONS.** (See chassis layout  
 The numbers and connections stated are marked upon the filter unit can and are  
 also shown on the chassis layout within the circle designating the filter con-  
 denser can.

- Filter #1 1.7 mfd connected between the center stud and can
- Filter #2 4.0 mfd connected between terminal (1) and can
- Filter #3 1.0 mfd connected between terminal (4) and can
- Detector filter .5 mfd connected between terminal (2) and can
- A-f filter 1.0 mfd connected between terminal (3) and can

DIAGRAM OF EARLY-TYPE MODEL  
 55-F AND 55-F-C.

ATWATER KENT MFG. CO. MODEL 55-F and 55-FC  
Chassis Early



BOTTOM WIRING OF EARLY-TYPE MODEL 55-F AND 55-FC.

Some of these sets had a combination resistor, No. 15274, which is superseded by two separate resistors, No. 16988 being used as R.F. bias resistor, and No. 17077 as filament shunt resistor.



MODEL 55-F and 55-FC  
Late  
Chassis

ATWATER KENT MFG. CO.

FILTER CONDENSER CONNECTIONS. See data pertaining thereto on page 162  
Bypass condenser specifications are shown below.

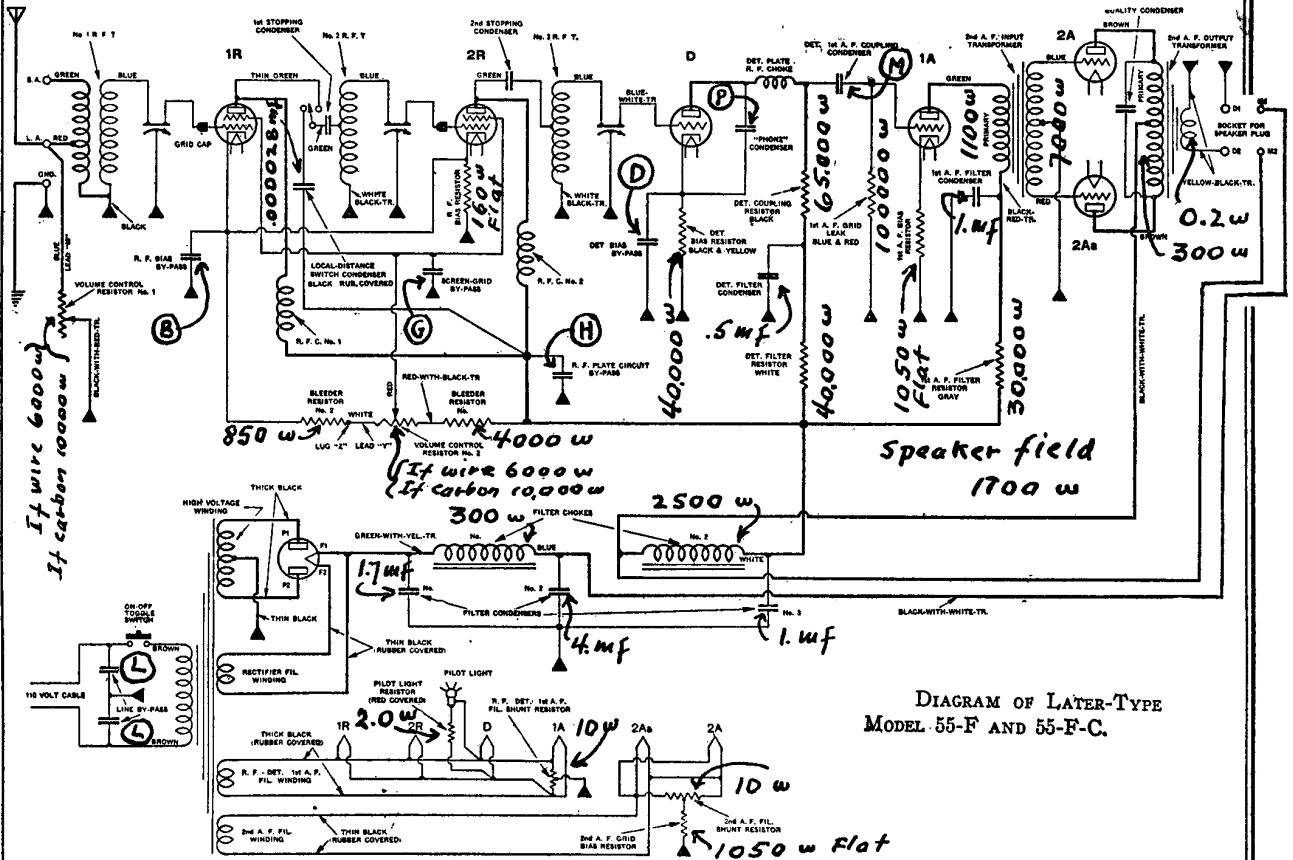
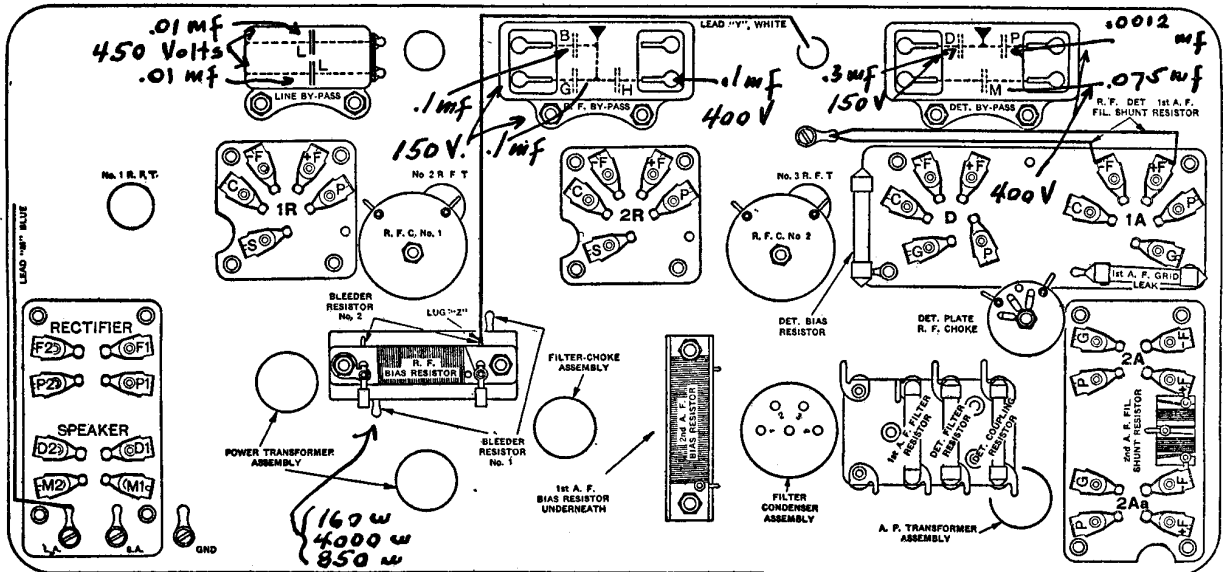


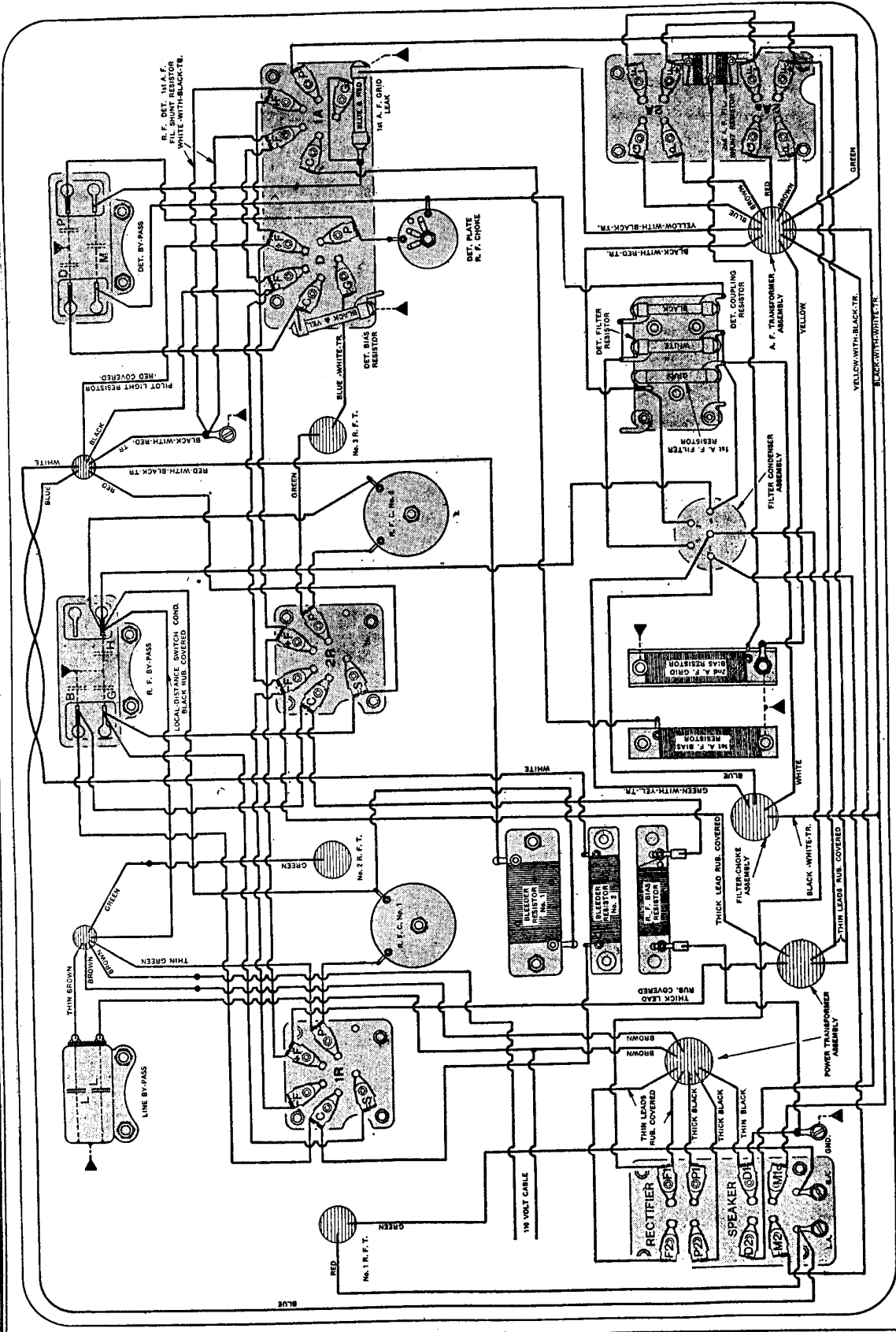
DIAGRAM OF LATER-TYPE  
MODEL 55-F AND 55-F-C.



BOTTOM CHART OF LATER-TYPE MODEL 55-F AND 55-F-C.

Filter condenser reference is to page 8-24.

# ATWATER KENT MFG. CO. MODEL 55-F and 55-FC Late Chassis



**BOTTOM WIRING OF LATER-TYPE MODEL 55-F AND 55-FC.**

The 1st-A. F. bias resistor is mounted under the 2nd-A. F. bias resistor. The three other wire-wound resistors are mounted together, being insulated from each other by sheets of fibre.

Some of these sets had a combination resistor, No. 16868, which is superseded by two separate resistors, No. 16988 being used as R. F. bias, and No. 16989 as bleeder No. 2.